



"Throw off the bowlines. Sail away from the safe harbor. Catch the trade winds in your sails. Explore. Dream. Discover."

- Mark Twain

A woman with long dark hair, wearing a white wide-brimmed hat and sunglasses, is shown in profile from the chest up. She is looking towards the right, with her right hand raised to the brim of her hat. The background is a bright, hazy sky with a soft gradient from light blue to white, suggesting a sunrise or sunset. The overall mood is serene and adventurous.

THE *grand* ADVENTURE

Life isn't always about where you work, or the kind of clothes you wear. Nor is it just about the wheels you drive, or the expectations you strive to meet. It's about something else entirely.

We think it's about the family you cherish, and the friends you make along the way. It's about doing what you want, when you want. It's about the freedom to decide for yourself. It's not about what you have, but what you can achieve. We think it's about the moments where you step back and realise life's a grand adventure.

The Rise is your canvas, and we invite you to create your masterpiece.

A group of four people (three men and one woman) are shown in profile, smiling and talking to each other outdoors. The scene is brightly lit by sunlight, creating a warm, golden glow. The people are dressed in casual, summery clothing. The background is a clear, bright sky.

PASSIONATE
community
AT HEART

Love what you do? So do we. The Rise is an active and thriving art, music, and creative community for like-minded people to come together and inspire each other, and to follow their passions.



RISE *above* THE REST

Located conveniently within 8 minutes walking distance from the Makati CBD, at the heart of the burgeoning North Makati (NOMA) district.

The Rise combines celebrated world-class architecture and interior design, with Shang Properties' signature build quality to create a one-of-a-kind residential and commercial development.

YOUR WORLD *your* RULES

You're active, you're passionate, and you live life to the fullest. Your home is your base from where you plan your days (and your nights); where you unwind after your adventures.

Your home is yours to create. The possibilities are endless.





MAKE IT YOUR OWN

Build a home that's perfect for you. Let your creativity flow and express your individuality.



**Artist's image for illustration purposes only.*



ONE-BEDROOM

UNIT D - AREA 27.17 SQM

**This layout shows a converted one-bedroom unit for illustration purposes only.*



BUILD
your
DREAM HOME

Whether you're a career-oriented professional, an aspiring artist / entrepreneur, or a busy urban couple - our one-bedroom apartments are lofty, airy, and designed to give you (and your partner!) the perfect space to build your dream home.



THE ONE BEDROOM

Our one-bedroom apartments are ideal for one, but are also ample enough for two - and you'll still have plenty of space for storage.



*Artist's image for illustration purposes only.



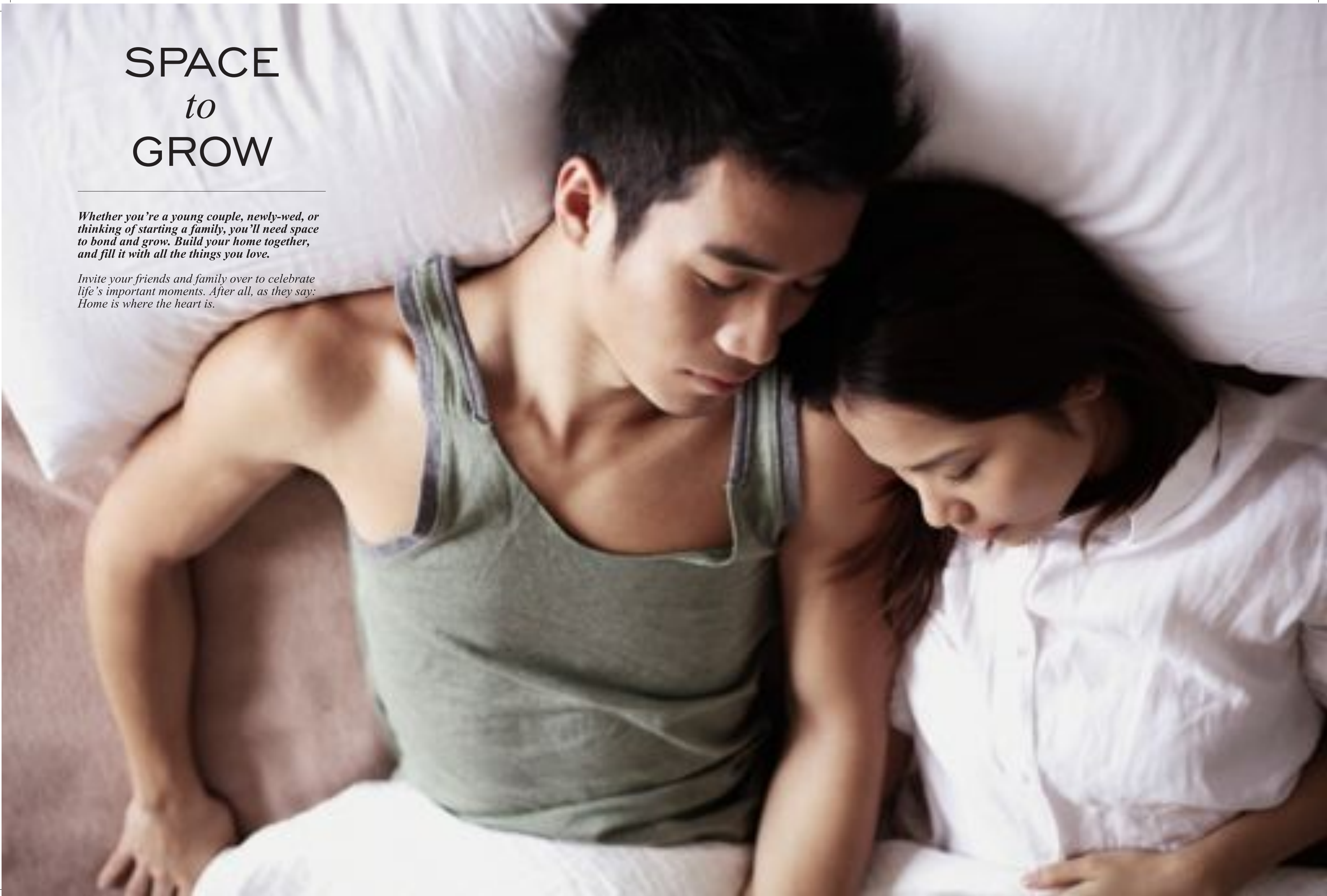
ONE-BEDROOM

UNIT C - 28.01 SQM

SPACE *to* GROW

Whether you're a young couple, newly-wed, or thinking of starting a family, you'll need space to bond and grow. Build your home together, and fill it with all the things you love.

Invite your friends and family over to celebrate life's important moments. After all, as they say: Home is where the heart is.

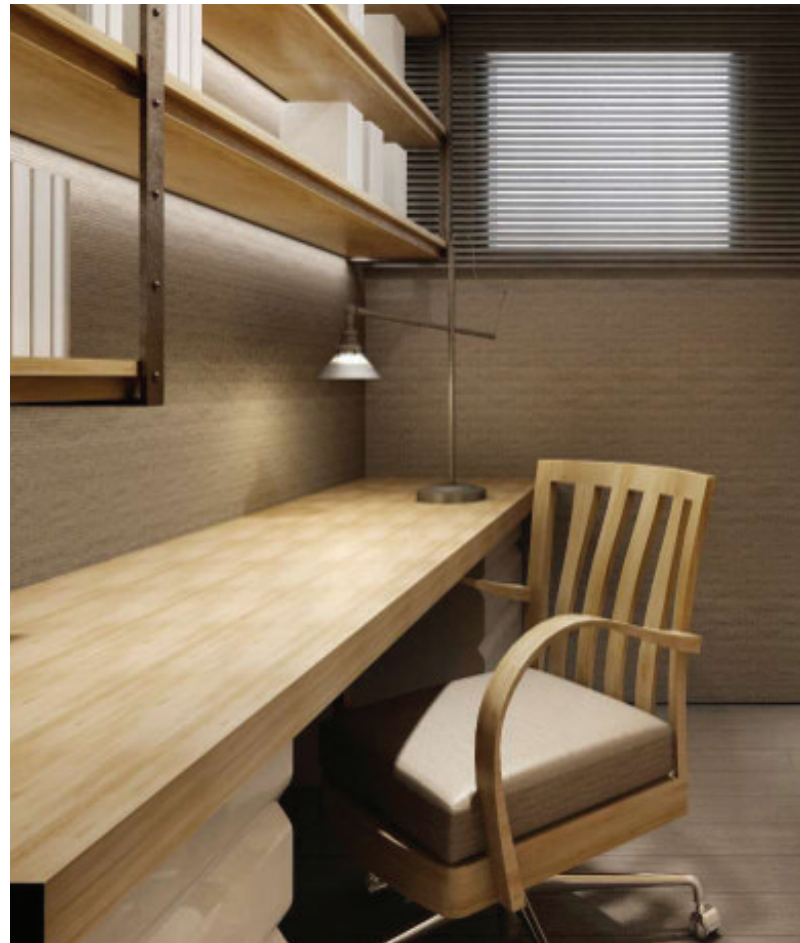


THE COUPLE

Return to your sanctuary after a day at the office - our two bedroom units are sized for spaciousness and comfort, perfect for young couples and small families.



*Artist's image for illustration purposes only.



TWO-BEDROOM

UNIT A - AREA 73.96 SQM - BALCONY AREA 3.09 SQM

**Artist's image for illustration purposes only.*

WORLD *class* AMENITIES

SPACES AT THE RISE

We designed The Rise with your comfort and ultimate convenience in mind - and that includes completely re-thinking what residential amenities are all about.

With Spaces at The Rise, we present a brand new concept that redefines what best-in-class amenities means: we start with a gorgeous 28 meter tropical pool, and a kids pool; a 380-meter private jogging path set in lush green landscaping; a barbecue patio; a billiards room; multi purpose-function rooms; and a reading room - and that's just a start. Did we mention there's also a two-storey world-class gym?

Divided into The Hangout, The Nest, and The Workshop - Spaces at The Rise is designed to let you decide how you want to play, relax and work - and to make the most of your day.

THE NEST LOUNGE AREA

*Artist's renderings of the amenities areas are subject to adjustments.

Amenities overview

Sometimes living in the city can get a little chaotic, so with Spaces at The Rise, we've created a private oasis of world-class amenities to help you make the most of your busy schedule.

1. RECEPTION
2. 'THE NEST' LOUNGE AREA
3. 'THE HANGOUT' LOUNGE AREA
4. 'THE WORKSHOP' LOUNGE AREA
5. GYM *2nd floor gym area not shown on this layout
6. PILATES/YOGA ROOMS
7. CHANGING ROOMS / SAUNA
8. PARTY / FUNCTION ROOMS
9. 'CRAWL SPACE' INFANTS' PLAY AREA
10. 'KID'S ZONE' TODDLERS' PLAY AREA
11. BILLIARDS ROOM
12. LIBRARY
13. KARAOKE ROOMS / HOME CINEMA
14. MAIN POOL
15. KIDS POOL
16. FLOATING LOUNGERS
17. SUN DECK
18. POOLSIDE LOUNGE
19. JOGGING TRAIL
20. OUTDOOR CHILDRENS PLAY AREA
21. THE LAWN
22. PROMENADE
23. BBQ AREA

*Artist's renderings of the amenities areas are subject to adjustments.

the HANGOUT

Life's more fun when you share it with the people you love. With almost 300 square meters of open lounge areas, The Playroom includes a karaoke room, a billiards room and more, and is perfect for entertaining friends and family, whether it's for a special occasion, or just to catch up over a cup of coffee.



'THE HANGOUT' LOUNGE AREA

the WORKSHOP

The Workshop is a fully-stocked, purpose-designed workspace that includes multi-function rooms, an I.T bar, a library and more - ideal for when you're in the mood to plan your next big adventure, need a quiet space to focus on your studies, or even to brainstorm on a start-up idea with your partners.



'THE WORKSHOP' LOUNGE AREA

the NEST

Take a break from the hustle and bustle of daily life in The Nest, our relaxation and well-being zone that includes swinging hammocks, comfy seats, garden terraces and much more. Curl up with your favourite novel, or chill out on the sun deck for a relaxing day with friends and family.



'THE NEST' LOUNGE AREA

**Artist's renderings of the amenities areas are subject to adjustments.*



GYM ENTRANCE



BILLIARDS ROOM

HEALTHY *urban* LIVING

Our expansive two-storey gym is packed with world-class training and exercise equipment designed for young professionals and families who work hard and play hard. Perfect for burning off that extra slice of pizza!



JUST *dive* IN

Cool off with a dip in the gorgeous 28 meter tropical pool, relax with a book under the swaying trees, or stretch your legs with a stroll around the 380 meter private jogging track. When it comes to unwinding after a long day at work or catching up with your friends on the weekends - we've got you covered.



the KID'S ZONE

The Rise is designed for kids too - with over 350 square meters of playspace for infants and toddlers, the Kid's Zone is perfect for the young ones to stretch their legs, climb a jungle gym, dive into a colourful ball pit, and even have a birthday party!





DINING *and services* TAILORED *for you*

With 2 levels, and more than 50 vendors for dining, retail, and services - you're never more than a few short steps away from everything you'll need in our boutique retail mall.

From uniquely quirky cafes and bars; to the best dining experiences this side of Makati; to banks, daycare centres, convenience stores, tailors, and spa services - we've assembled the best retailers and service providers to ensure that at The Rise, there's something for everyone.

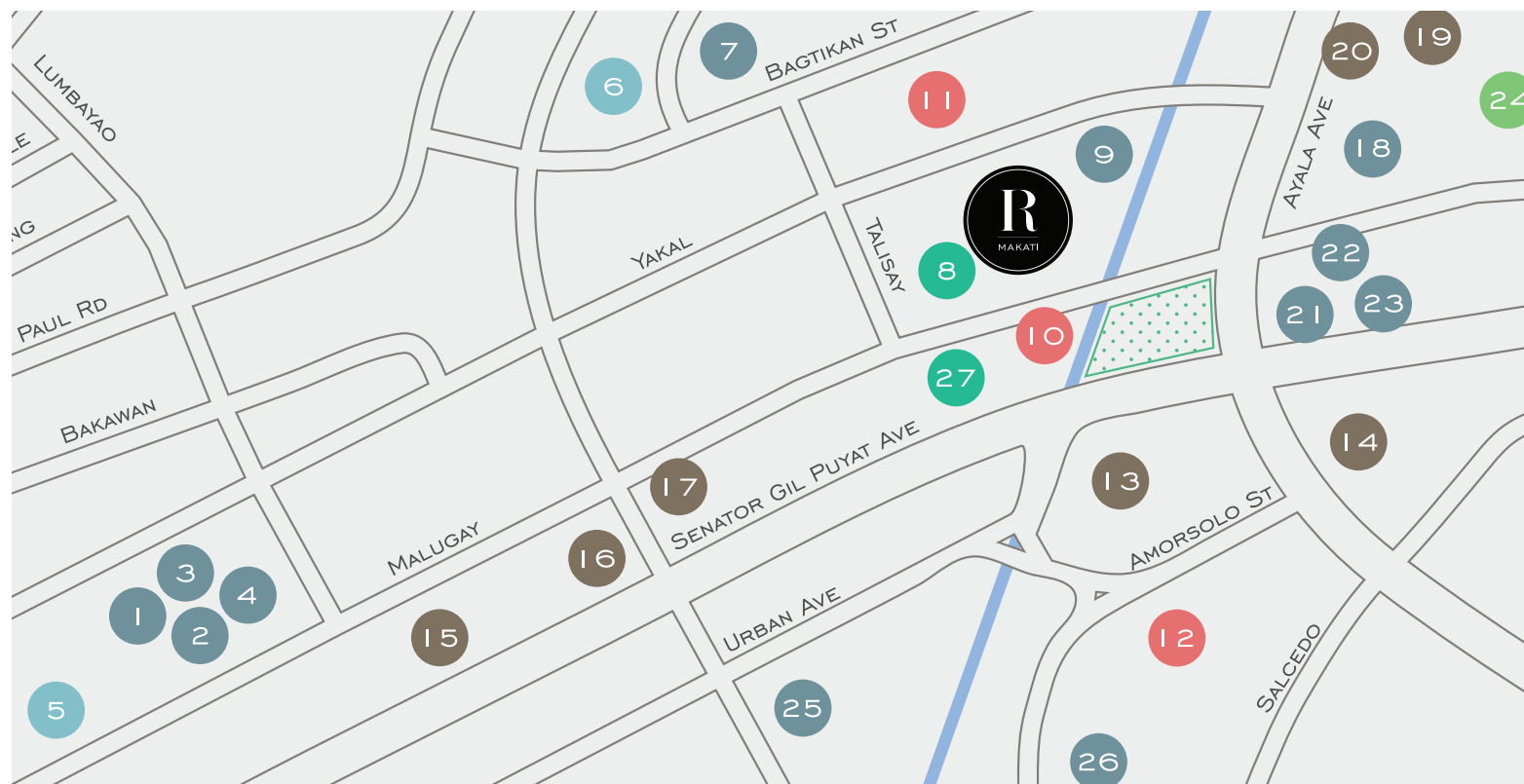


*Artist's renderings of the amenities areas are subject to adjustments.

WHATS around NOMA?

The Rise is situated at the heart of NOMA, or North Makati - the burgeoning art, design, and culinary district just north of Ayala Avenue. The area is known for its unique mix of galleries, delicatessens, indie music venues, and one-of-a-kind retail experiences - all of which is only a stone's throw from The Rise.


What better place to experience this thriving and ever-changing community of artists, chefs, and creatives than at The Rise!

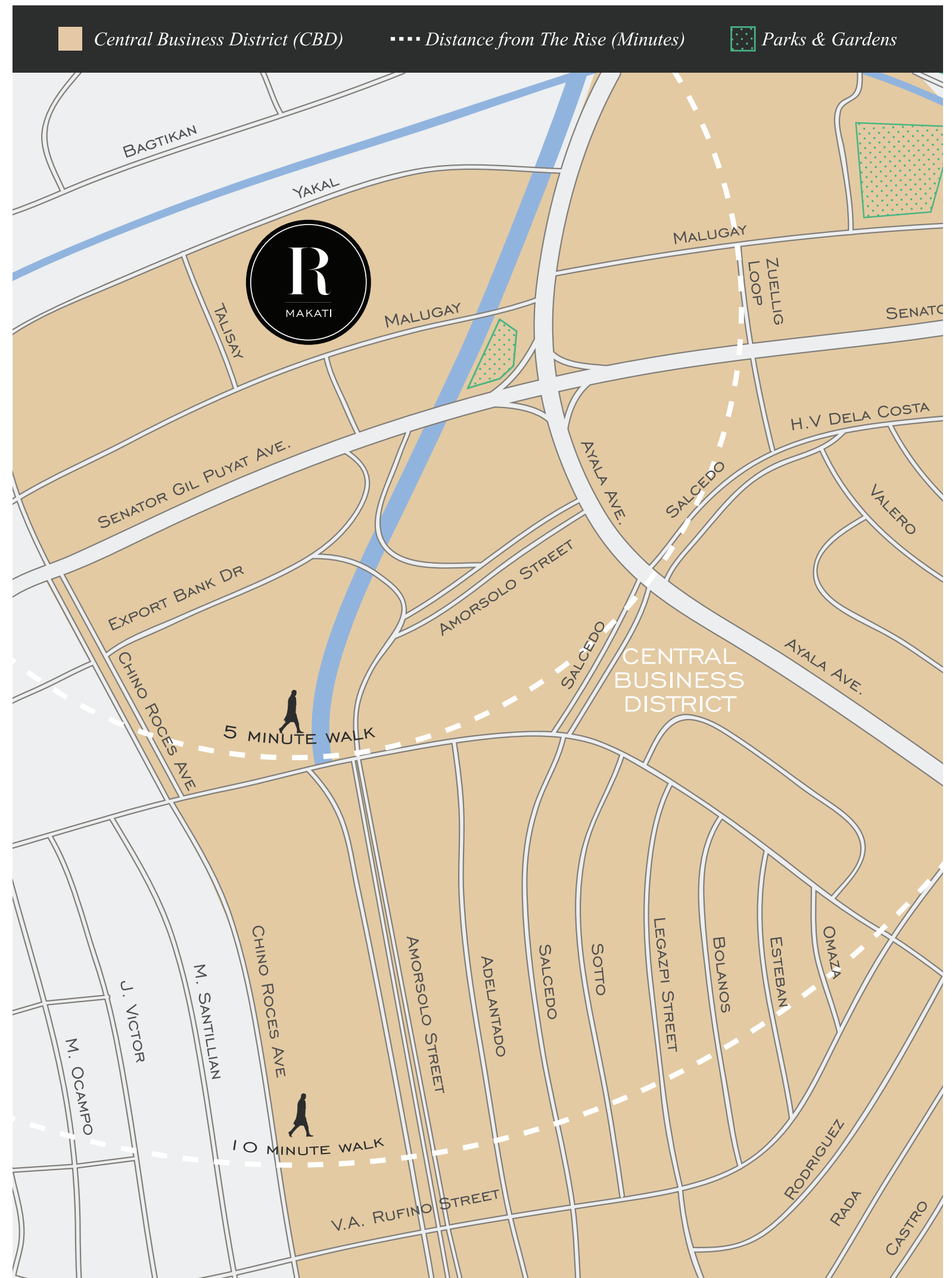


1. Carpaccio Ristorante Italiano
2. Chesa Bianca Swiss Restaurant
3. I'm Angus Steak House
4. Santis Delicatessen
5. The Collective
6. Philippine Institute of Interior Designers
7. The National Shrine of the Sacred Heart
8. Tiara Hotel
9. Makati Fire Station
10. Makati Central Post Office

11. Makati Central Police Headquarters
12. Makati Medical Center
13. People Support
14. RCBC Plaza
15. Petron Gas Station
16. Caltex Gas Station
17. Bank of the Philippine Islands
18. Rustan's Supermarket
19. National Bookstore
20. Handyman

21. New Bombay
22. Starbucks
23. Earle's Delicatessen
24. Makati Golf Club Driving Range
25. Petra and Pilar Restaurant
26. Stockton Place by Chef Celine
27. Skyland Plaza Condominium

 Parks & Gardens





The Rise is brought to you by Shang Properties, Inc., an affiliate of Shangri-La Hotels and Resorts worldwide, and Kerry Properties Limited, one of Hong Kong's largest property investment and development companies with premier residential and commercial projects in China, Hong Kong, Macau and Australia.

In the Philippines, it joins the other prominent developments of the group such as Shang Salcedo Place, The Shang Grand Tower and The Enterprise Center in Makati, and The St. Francis Shangri-La Place, Shangri-La Plaza, One Shangri-La Place in Ortigas Center and Horizon Homes, Shangri-La hotel at the Fort.

